

GILLES HPK-RA	12,5 kW	15 kW	20 kW	25 kW
length l (mm)	1250	1250	1250	1250
width b (mm)	675	675	675	675
height h (mm)	1420	1420	1420	1420
weight (kg)	645	669	695	720
GILLES HPK-RA	30 kW	35 kW	40 kW	45 kW
length l (mm)	1270	1270	1270	1270
width b (mm)	870	870	870	870
height h (mm)	1570	1570	1570	1570
weight (kg)	888	900	932	949
GILLES HPK-RA	49 kW	60 kW	70 kW	
length l (mm)	1270	1270	1270	
width b (mm)	870	870	870	
height h (mm)	1790	1790	1790	
weight (kg)	1298	1330	1352	
GILLES HPK-RA	75 kW	85 kW	95 kW	
length l (mm)	1510	1510	1510	
width b (mm)	870	870	870	
height h (mm)	1790	1790	1790	
weight (kg)	1543	1561	1570	
GILLES HPK-RA	100 kW	120 kW	145 kW	
length l (mm)	2350	2350	2350	
width b (mm)	870	870	870	
height h (mm)	1790	1790	1790	
weight (kg)	2375	2420	2463	

subject to alterations

Capacity	10-25 kW	30-45 kW	49-70 kW	75-95 kW	100-145 kW
Distance A	500 mm	500 mm	500 mm	500 mm	600 mm
Distance B	200 mm	200 mm	200 mm	200 mm	200 mm
Distance C	750 mm	800 mm	800-1200 mm	1200 mm	1200 mm
Distance D	1000 mm	1200 mm	1200 mm	1500 mm	2340 mm
Diameter Chimney	160 mm	180 mm	200 mm	200 mm	250 mm
Connected height Chimney	1600 mm	1900 mm	2050 mm	2050 mm	2050 mm

our partner

IMPRINT
 Mediaowner & publisher:
 GILLES Energie- und Umwelttechnik GmbH,
 Koaserbauer Straße 16, A-4810 Gmunden
 Tel: +43 7612 73760 Fax: +43 7612 73760 17
 email: office@gilles.at www.gilles.at



"Europe most modern pellet heating"

GILLES HPK-RA PELLET HEATERS

12,5 - 145 kW

All plants TÜV examined!

Quality means success



www.gilles.at



Gilles pellet heaters are comfortable, luxurious and safe

all systems with an efficiency of over 90 %

GILLES Standard Specification

- >Fully automatic pellet combustion
- >Fully automatic ash removal
- >Lambda probe ensures controlled combustion
- >Automatic ignition
- >Control of exhaust temperature
- >Emergency operation with log wood
- >Cellular wheel sluice prevents backfiring
- >Outside temperature control
- >Heating loop control
- >Boiler control
- >Buffer control for solar heating combination
- >Temperature can be adjusted from inside the premises
- >Fire-View (remote servicing)
- >Back feed lifting
- >Solid construction
- >6 mm boiler sheet
- >30 mm solid shaft
- >maximum convenience

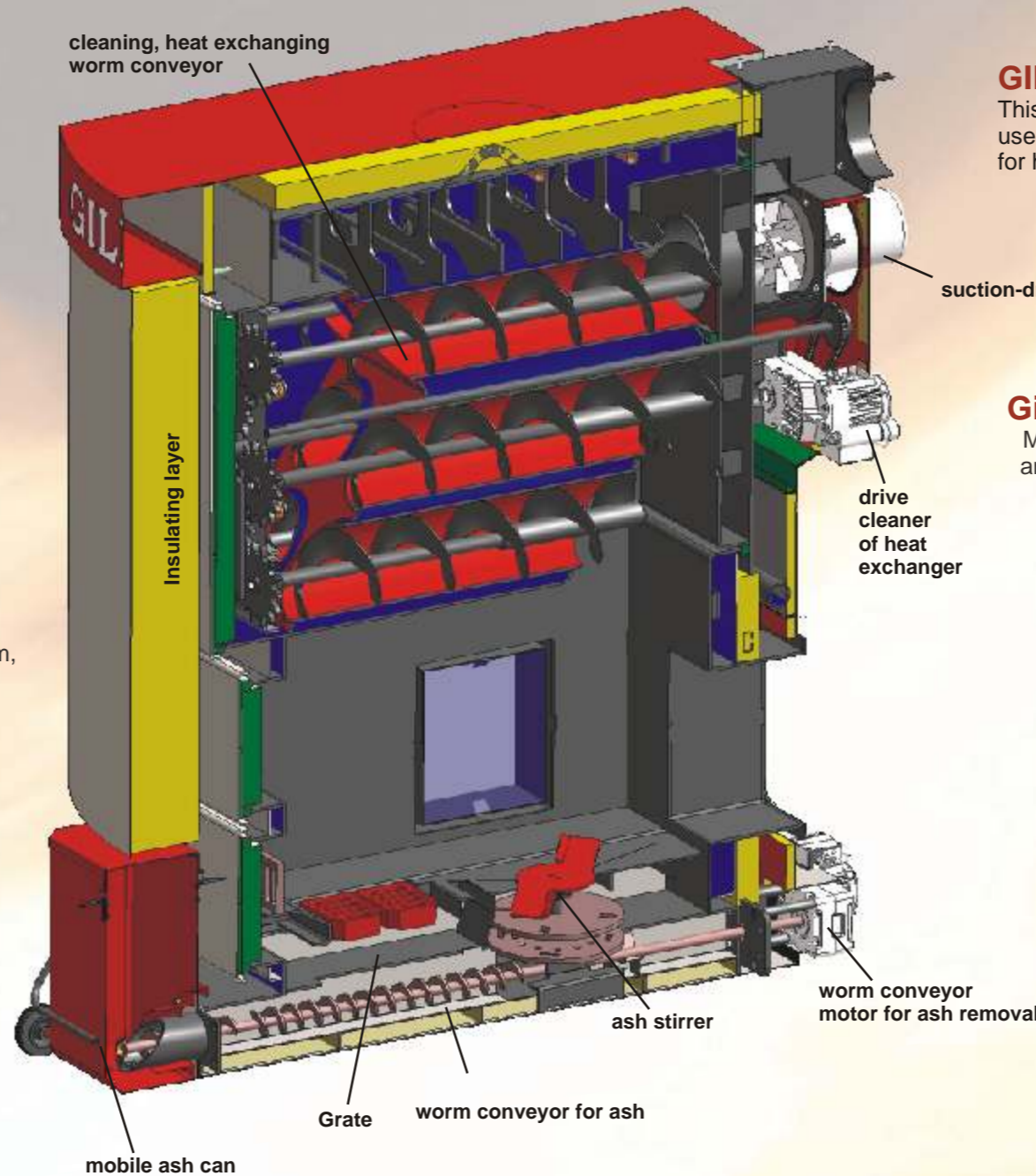
Rule of thumb of pellets

- >2 t of pellets are equivalent to 1000 litres of heating oil
- >Bulk weight 650kg/m³
- >Calorific value > 4,9kWh/kg

GILLES Quality

- >Material can be conveyed from a distance of up to 10 m, using our specially designed conveyor with unique linked-up progressive worm drives
- >High quality conveyor system as proven in many installations
- >more the 8000 systems currently in operation in Austria, Germany, Switzerland, Italy, Netherlands, France and Ireland
- >Output range 5 to 145 kW bigger on request
- >You can view a system near to you
- >Free advice
- >Free CAD 3D design
- >Guaranteed supply of spare parts up to 10 years

GILLES product range



GILLES cleaner of heat exchanger
solid, reliable and quiet



GILLES safety
The fully approved all-metal cellular wheel sluice separates reliably combustion and storage

GILLES Combustion technology
This guarantees high combustion temperatures and best use of your fuel. Good air regulation is the precondition for highest quality of combustion.



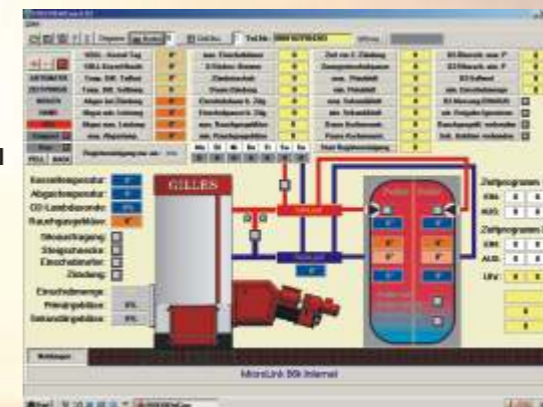
Gilles JET-Burner
Many years of experience high tech development and robust materials are your guarantee for
>Clean combustion
>long service life
>log wood operation



Comfortable operation
Since the beginning of our developments variable regulation and highest comfort are our priorities. Electronic surveillance, automatic ignition and lambda controlled combustion give you the chance to enjoy natural warmth. Convince yourself!

Near or far everything is possible

With Fire-View you can choose between two opportunities. With the Fire-View-Modem all information is transported by the telephone net. The range in practice is unlimited! Fire-View-CAN works with a connection in the house, the so-called CAN-bus. This cable has a length up to 300 metres.



Quality means success

